

The last couple of issues have shown bullock teams operating in the timber industry in the Eungella region.

This week we will start looking at the sawmills.

The first record of timber being sawn in the Mackay region was a saw pit established in 1880, south of the present Eungella township, for building at "The Diggings", an early gold mining town. .

Excerpt from: A project researched by Leigh Cunningham (Strack) when she was at High School

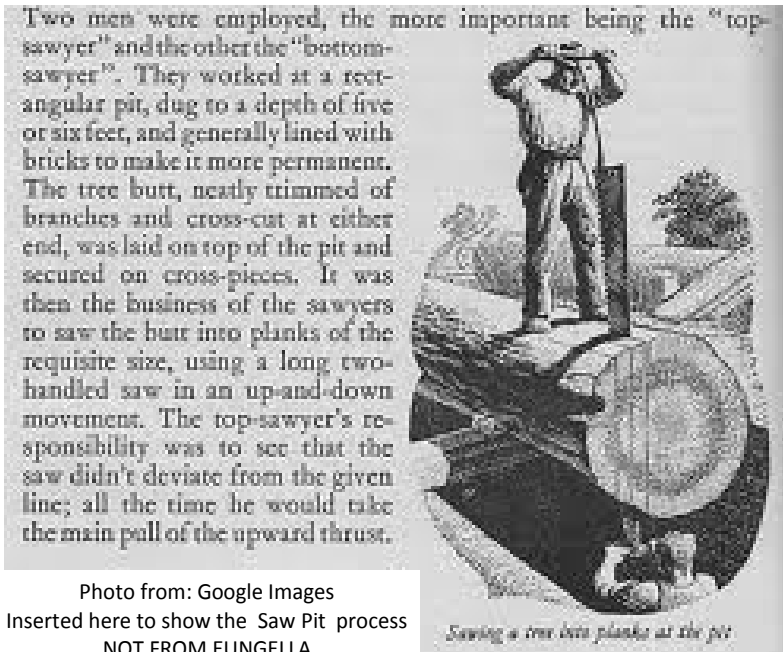
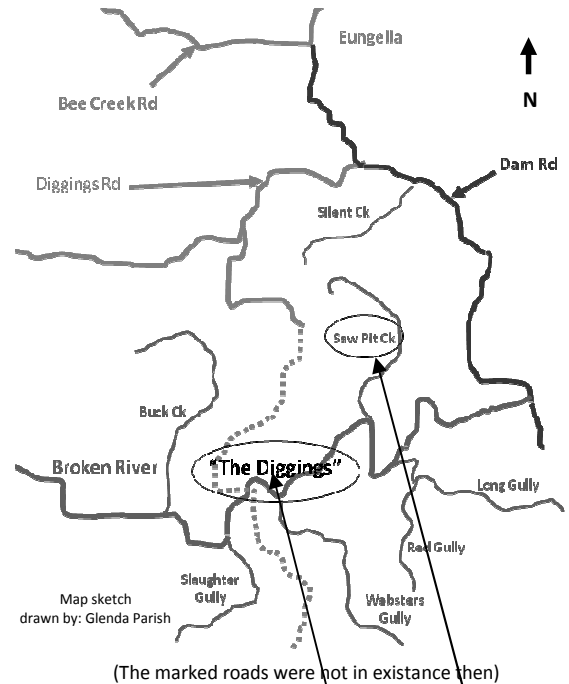


Photo from: Google Images
 Inserted here to show the Saw Pit process
 NOT FROM EUNGELLA



The first timber that was sawn was on Saw Pit Creek to build the township of Eungella Diggings.

Excerpts from: A project researched by Leigh Cunningham (Strack)

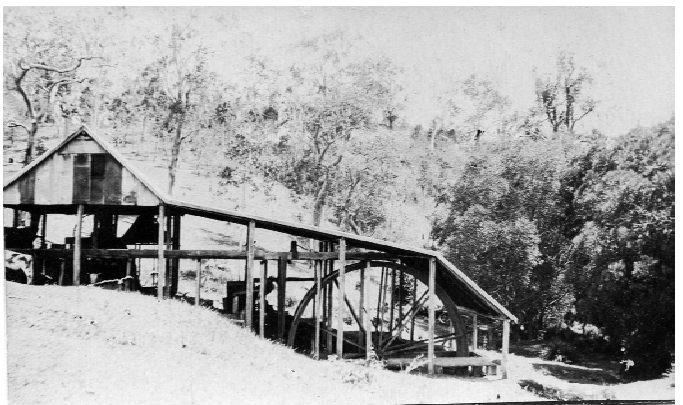
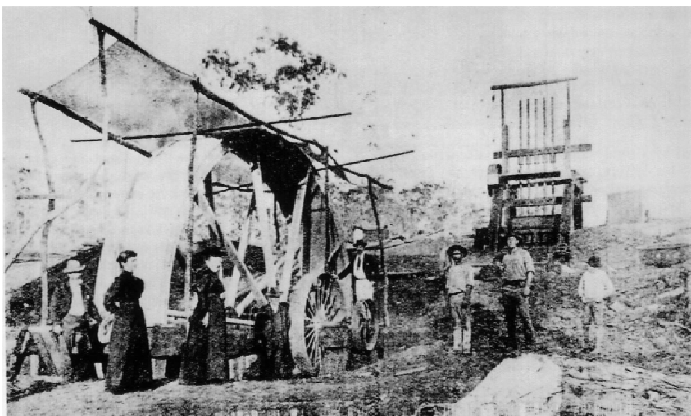


Photo from: Ken & Evelyn Burgess

'The Lady Norman' mine (name of Queensland's Governor's wife) was on the left bank of Broken River.

The 'Gracie Norman' (name of daughter of Lady Norman) mine syndicate erected a five head battery stamper driven by a water wheel 24 ft in diameter (made from cedar pit sawn there) on the south side.

Eungella's Story 5 Decades by J.H. Williams in Mackay Daily Mercury 1 Aug 1972

At that time "The Diggings" township was labeled 'Credition Township' on a map ca1890 (long before what we now call the Credition area was opened up in the 1930s). The first post office at the Diggings named Eungella opened in 1890 closed 1905. There was nothing established where Eungella township is today. In 1930 the Post Office was reopened as Eungella in what is now our township.

Info researched by: Glenda Parish

Contributed by: Glenda Parish

2 000 men worked on the Gold fields. They had two crushing plants, one five head and a ten head. The five head was powered by a water wheel (the 'Gracie Norman' mine), the ten head was powered by steam (on 'The Bobby Dazzler' claim which became the principal 'Orchid P.C. mine'). There were five hotels, the main hotel was the Golden Orchard, which was on the north side of the River. All the hotels were pit sawn out of red cedar. All the mail and goods was packed on horse from Finch Hatton, up a spur in the mountain called the Carl Flohr Track. There was another track a bit further on called Charley Armstrong Track. Charley Armstrong was the husband of Dame Nellie Melba who was one of the World's greatest opera singers. When the gold rush was at Charters Towers, they all left the Diggings at Eungella.. (Most were gone by 1901) There was 1 500 lb of gold mined at the Diggings in its run.

The road up Eungella Range was surveyed in 1904 and built to be usable by drays by 1907.

Excerpts from: A project researched by Leigh Cunningham (Strack), with some additional Info researched by: Glenda